

INDOFINE CHEMICAL COMPANY, INC.  
121 Stryker Lane, Bldg. 30  
Hillsborough, NJ 08844  
chemical@indofinechemical.com

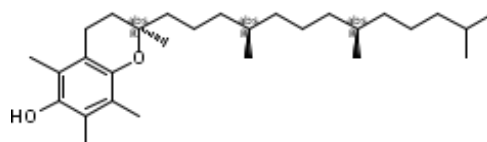
Phone: (908) 359-6778

Fax: (908) 359-1179

## SPECIFICATION SHEET

**Cat No.: 06-061**

<u>Product:</u>	<b>VITAMIN E</b>
<u>CAS Number:</u>	[59-02-9]
<u>Chemical Formula:</u>	C <sub>29</sub> H <sub>50</sub> O <sub>2</sub>
<u>Molecular Weight:</u>	430.71
<u>Melting Point:</u>	76-77°C
<u>Appearance:</u>	Slightly Yellow, Clear, Viscous oil
<u>Solubility:</u>	Freely soluble in oils;fats;acetone;alcohol
<u>Absorbance in ethanol:</u>	at about 284nm(max.): 42.0-45.0 at about 254nm(min.): 7.5-9.0
<u>Acidity:</u>	max. 1.0ml of 0.1N NaOH
<u>Sulphated ashes:</u>	0.1% max
<u>Heavy metals:</u>	20ppm max
<u>Storage:</u>	Cool dry place
<u>Assay (GC):</u>	98.0-102.0%



this enantiomer

